

GRASS MATS[®]
EUROPE

Europe's leading manufacturer of rubber matting



The *specialists* in
Rubber Safety Surfacing

An environmentally friendly, non-slip, impact absorbing safety surface.

Grass? We've got you covered...



RubbaMats are a brilliant way of increasing the safety of natural grass surfaces. Common applications include...

- Children's Play Areas
- Events Ground Protection
- High Footfall Pathways
- General Ground Reinforcement



Ground safety coverage, without sacrificing aesthetics.

The grass really is **greener...**

Grass will grow through and cover the apertures of the rubber grass matting within 4-6 weeks, at which point the grass can be mowed as usual!

Green Tip #1

Please check the suitability of this product prior to installation, as CFH will be affected by the soil type, moisture levels, and grass.



Why **RubbaGrass**®?

Many safety surfaces are forced to make some compromise compared to RubbaGrass®. It is low maintenance and cost effective enough to cover large areas unlike Artificial Grass or RubbaTiles®.

Unlike Wood Mulch and Sand, there are no parts needing topping up or that can be a danger.



	RubbaGrass®	Artificial Grass	RubbaTiles®	Grass	Sand	Wood Mulch
Durability	● Excellent	● Excellent	● Excellent	● Good	● Good	● Fair
Protection	● 3m	● 3m	● Up to 2.4m	● 1.5m	● 3m	● 3m
Maintenance	● Easy ¹	● Easy ²	● Easy ³	● Fair ⁴	● Difficult ⁵	● Difficult ⁵
Accessibility	● Excellent	● Excellent	● Excellent	● Fair	● Poor	● Poor
Risks	● Good	● Good ⁶	● Fair ⁷	● Good	● Poor ⁸	● Poor ⁸
Hygiene	● Good	● Good	● Good	● Fair ⁹	● Poor ¹⁰	● Poor ¹⁰
Cost	● Low	● High	● High	● Low	● Low	● Fair

RubbaGrass® - green across the board...



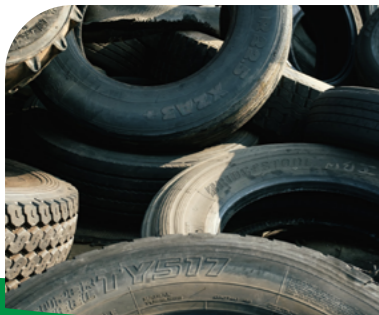
Recycled and recyclable, RubbaGrass® is a great environmentally friendly solution.

Notes

- 1. Mowing required.
- 2. Yearly fluffing required.
- 3. Yearly power wash required.
- 4. Regular seeding in high footfall areas.
- 5. Raking and topping up.
- 6. Friction burns are possible.
- 7. Heat burns are possible.
- 8. Can get into eyes.
- 9. Hidden objects possible.
- 10. Hidden objects and animal contamination.

Standards & Guarantees

- ✓ BS 7188:1998 for slip resistance, resistance to abrasive wear, indentation, and flammability
- ✓ Brominated Flame Retardant criteria
- ✓ European PAH requirements
- ✓ Critical Fall Height BS EN 1177:2018, in excess of 3 metres
- ✓ ASTM F1292 Impact Attenuation



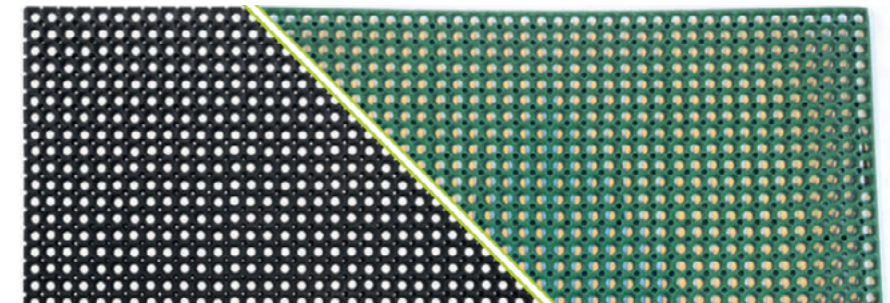
Product Details

Black and Green are our standard colours, but other colours are available upon special order. Commonly ordered in a pallet quantity; 60 to 80 mats.

Code	Product	Size	Thickness
SS04100/22	RubbaGrass® Matting, Black	1,500mm x 1,000mm	22mm
SS04100/22G	RubbaGrass® Matting, Green	1,500mm x 1,000mm	22mm
SS04100/22/FR	Flame Retardant RubbaGrass® Matting	1,500mm x 1,000mm	22mm
RC04100/16	RubbaGrass® Lite Matting	1,500mm x 1,000mm	16mm
RC04139	RubbaLawn® Interlocking Matting	910mm x 910mm	14mm
GG01460	Grassshield Reinforcement Mesh	2,000mm x 30,000mm	4mm
GG01460-1.5	Grassshield Reinforcement Mesh	1,500mm x 30,000mm	4mm
ACC022	Black Cable Ties (pack of 100)	200mm x 4.8mm	-
ACC003	Plastic Fixing Pegs	140mm length	-

Green Tip #2

We recommend using **grassshield**® alongside **RubbaGrass**® for ground reinforcement second to none!



How to install *RubbaGrass*®

All of our rubber matting can be fitted onto existing grass, seeded topsoil, and new turf!

1. Mark out the site where the *RubbaGrass*® is to be laid. Clear debris and cut the grass short.
2. Level out uneven areas with a quality top soil for seeding or to turf the area.
3. Where ground is prone to being boggy and wet you may lay *Grassshield*® to help stabilise the ground in that area.
4. Lay the safety mats onto the ground, cutting to fit around any obstacles or equipment.
5. Ensure the rubber safety mats are butted closely together when laying, then use cable ties at 150mm intervals to securely join the mats together.

Green Tip #3

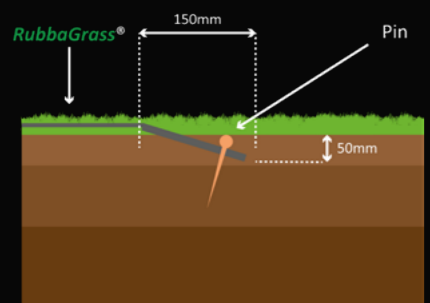
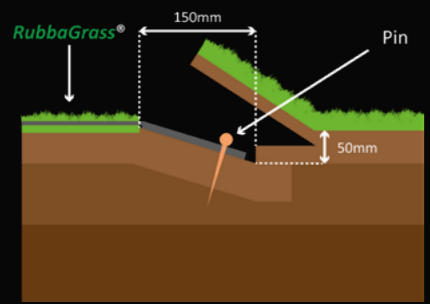
Tools you'll need include a tape measure, secateurs, a Stanley knife, rubber gloves, a hammer, a grass edge cutter, a rechargeable drill, and a 6mm drill bit.

6. Cut the ends of the cable ties and push the, "knuckles", of the cable ties underneath the matting.
7. Peg the mats to the ground, using approximately 3 - 5 pegs per perimeter edge.

Optional steps

These steps will achieve better edge blending and avoid tripping over the mats or having them pulled up by mowing.

1. Roll back approximately 150mm from the edge of the rubber safety matting using a spade or cutting tool.
2. Put the rubber safety mats back into place and peg through the holes.
3. Refill the edge with top soil and seed or turf to regain the original level surface.



Snow? Also covered...

Our *RubbaSnow*® matting is a brilliant permanent or temporary option to consider when looking for ground protection in icy areas for many reasons:

- ✓ *Easy to fit, anti-slip surfacing*
- ✓ *Strong tolerance of extreme cold conditions*
- ✓ *Shock absorbent, so soft on falls*

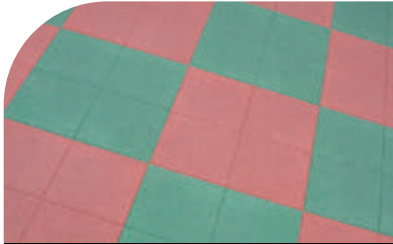


FAQ's - Asked & Answered

- | | |
|--|--|
| <p>Q <i>How long before I can mow the RubbaGrass®?</i></p> <p>A Grass will begin to grow through the matting within 4-6 weeks after installation. From this point, the area can be easily mowed.</p> | <p>Q <i>How impact resistant is RubbaGrass®?</i></p> <p>A RubbaGrass® is rated for falls of up to 3 metres, and complies with BS EN 1177:2018 as a result.</p> |
| <p>Q <i>Does RubbaGrass® last a long time?</i></p> <p>A Our RubbaGrass® comes with an impressive 10 year product guarantee, ensuring peace of mind.</p> | <p>Q <i>What colour is RubbaGrass®?</i></p> <p>A The standard options are black and green, but any colour is possible upon special order; just ask!</p> |

The RUBBER[®]
company

GrassMats[®] Europe is a member of *The Rubber Company* - providing an even wider range of options when it comes to safety flooring...



RubbaTiles[®]

Available in a wide range of colours and thickness's.



RubbaPour[®]

A wet our surfacing - EPDM rubber granules bounding in a polyurethane resin.



SafaWood[®]

An anti-slip wooden decking with EPDM rubber infill.

GRASS MATS[®]
EUROPE

Contact Us

t: +44 (0) 1794 328 411

e: sales@grassmats.eu

w: www.grassmats.eu

Visit Us

Romsey Industrial Estate,
Greatbridge Road, Romsey,
SO51 0HR, United Kingdom

